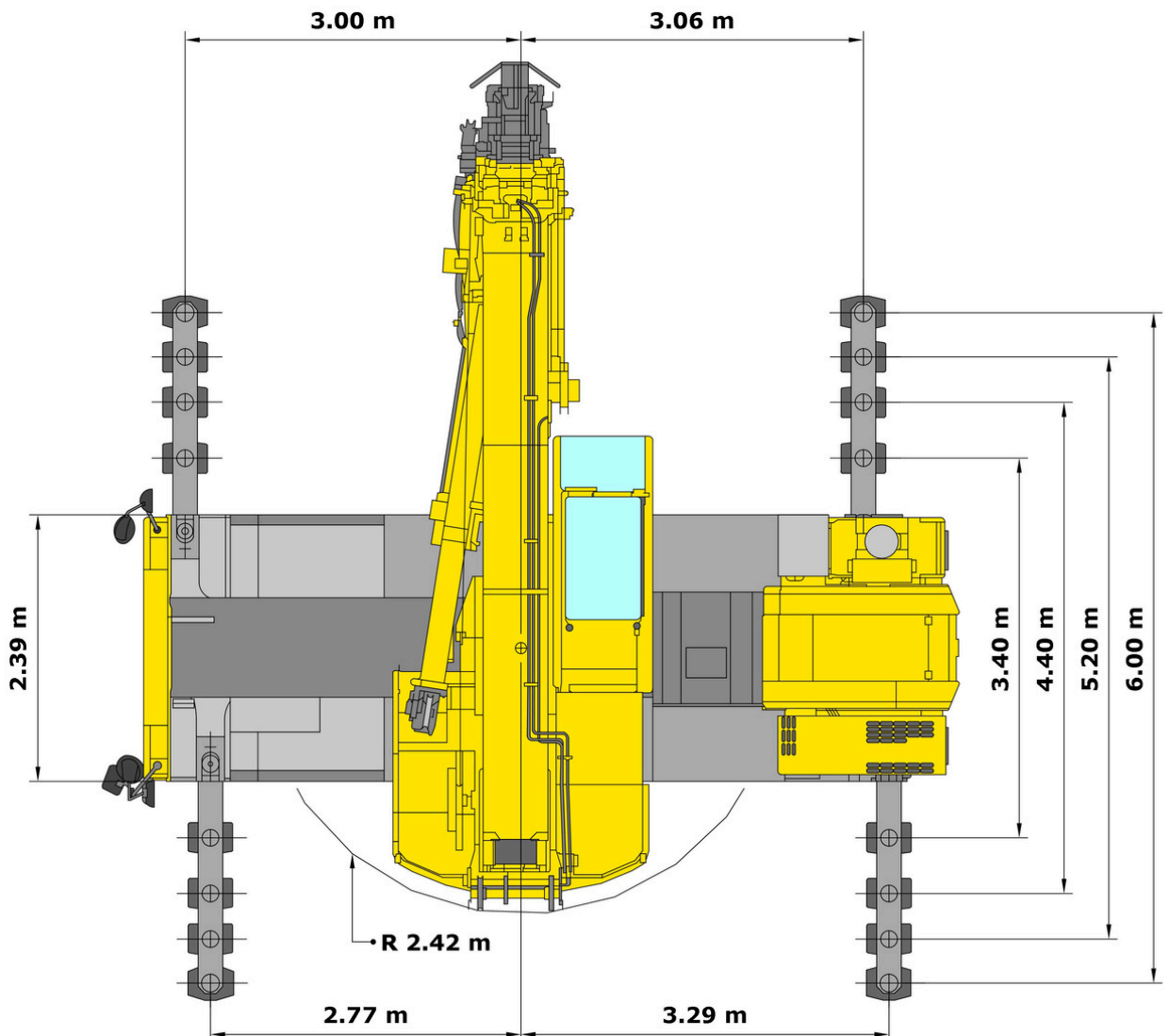
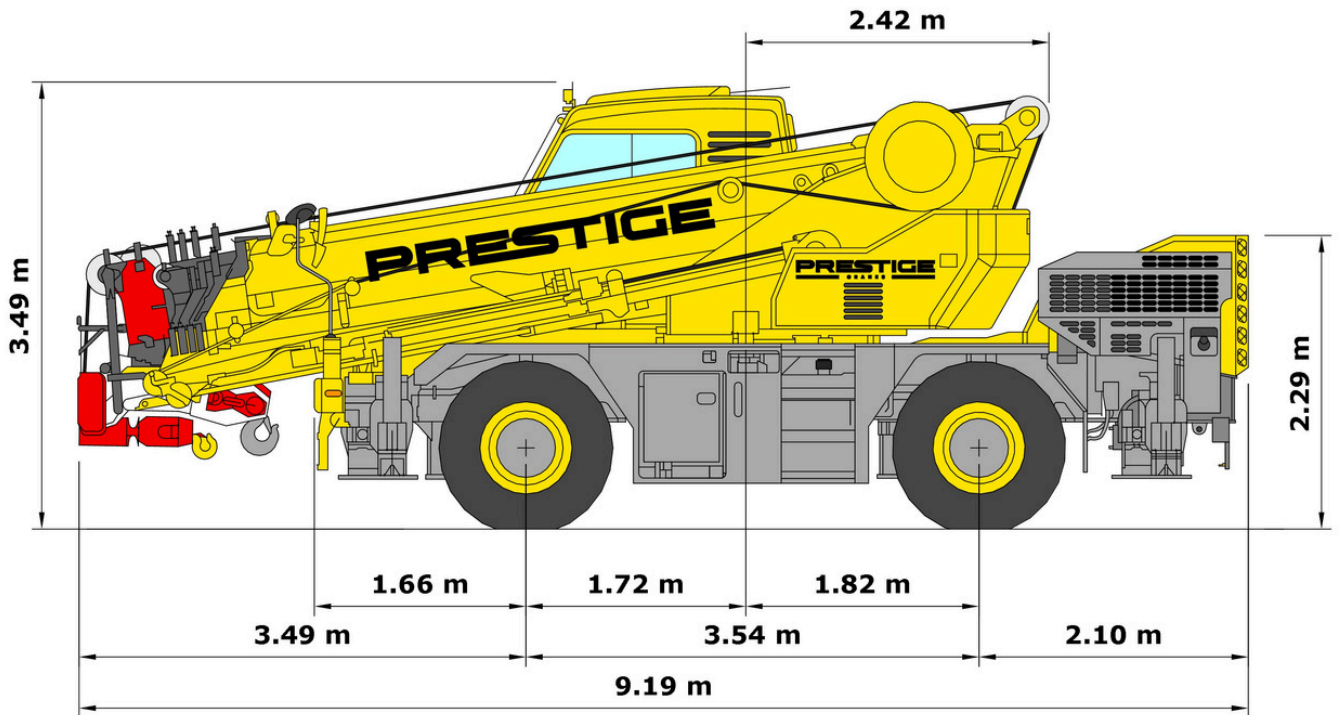


Kato CR 250 RV

25T City Crane



Kato CR 250 RV 25T City Crane



6.7m - 29.0m

Working radius (m)	6.0m						5.2m						4.4m						3.4m						2.085m											
	Outriggers fully extended (6.0m) - 360° full range						Outriggers intermediately extended (5.2m) - over side						Outriggers intermediately extended (4.4m) - over side						Outriggers intermediately extended (3.4m) - over side						Outriggers completely retracted (2.085m) - over side											
	6.7m Boom	11.25m Boom	15.74m Boom	20.2m Boom	24.6m Boom	29.0m Boom	6.7m Boom	11.25m Boom	15.74m Boom	20.2m Boom	24.6m Boom	29.0m Boom	6.7m Boom	11.25m Boom	15.74m Boom	20.2m Boom	24.6m Boom	29.0m Boom	6.7m Boom	11.25m Boom	15.74m Boom	20.2m Boom	24.6m Boom	29.0m Boom	6.7m Boom	11.25m Boom	15.74m Boom	20.2m Boom	24.6m Boom	29.0m Boom						
2.8	25.00	13.00	12.00	9.00	8.00	7.00	25.00	13.00	12.00	9.00	8.00	7.00	22.00	13.00	12.00	9.00	8.00	7.00	20.00	13.00	12.00	9.00	8.00	7.00	20.00	13.00	12.00	9.00	8.00	7.00	9.70	9.70	8.85	8.30	7.85	6.25
3.0	22.00	13.00	12.00	9.00	8.00	7.00	22.00	13.00	12.00	9.00	8.00	7.00	22.00	13.00	12.00	9.00	8.00	7.00	20.00	13.00	12.00	9.00	8.00	7.00	20.00	13.00	12.00	9.00	8.00	7.00	8.55	8.55	8.00	7.60	7.25	5.80
3.5	20.00	13.00	12.00	9.00	8.00	7.00	20.00	13.00	12.00	9.00	8.00	7.00	20.00	13.00	12.00	9.00	8.00	7.00	14.65	13.00	12.00	9.00	8.00	7.00	14.65	13.00	12.00	9.00	8.00	7.00	6.40	6.40	6.35	6.15	6.00	4.90
4.0	17.00	13.00	12.00	9.00	8.00	7.00	17.00	13.00	12.00	9.00	8.00	7.00	17.00	13.00	12.00	9.00	8.00	7.00	11.10	11.10	11.00	9.00	8.00	7.00	11.10	11.10	11.00	9.00	8.00	7.00	5.00	5.00	4.95	5.05	5.00	4.20
4.5	15.00	13.00	12.00	9.00	8.00	7.00	15.00	13.00	12.00	9.00	8.00	7.00	14.30	13.00	12.00	9.00	8.00	7.00	8.75	8.75	8.70	8.80	8.00	7.00	8.75	8.75	8.70	8.80	8.00	7.00	3.95	3.95	3.95	4.20	4.25	3.60
5.0	13.00	13.00	12.00	9.00	8.00	7.00	13.00	12.00	9.00	8.00	7.00	11.40	11.35	9.00	8.00	7.00	7.00	7.00	7.15	7.10	7.35	7.35	7.00	7.00	7.15	7.10	7.35	7.35	7.00	3.20	3.20	3.50	3.60	3.15	3.15	
5.5	13.00	12.00	9.00	8.00	7.00	13.00	12.00	9.00	8.00	7.00	9.35	9.35	9.00	8.00	7.00	5.90	5.90	6.15	6.40	6.30	2.60	2.60	2.90	3.10	2.60	2.60	2.90	3.10	2.70	2.60	2.60	2.90	3.10	2.70	2.70	
6.0	12.00	11.50	9.00	8.00	7.00	10.90	10.80	9.00	8.00	7.00	7.85	7.85	8.15	8.00	7.00	5.00	4.95	5.25	5.55	5.55	2.15	2.10	2.45	2.65	2.15	2.10	2.45	2.65	2.35	2.15	2.10	2.45	2.65	2.35	2.35	
6.5	11.30	10.65	9.00	8.00	7.00	9.20	9.15	9.00	8.00	7.00	6.70	6.70	7.00	7.30	7.00	4.25	4.20	4.50	4.80	4.95	1.75	1.75	2.05	2.25	1.75	1.75	2.05	2.25	2.05	1.75	1.75	2.05	2.25	2.05	2.05	
7.0	10.40	9.90	9.00	8.00	7.00	7.95	7.85	8.20	8.00	7.00	5.80	5.75	6.10	6.40	6.60	3.65	3.60	3.90	4.20	4.40	1.40	1.40	1.70	1.95	1.40	1.40	1.70	1.95	1.80	1.40	1.40	1.70	1.95	1.80	1.80	
8.0	7.90	7.90	8.30	8.00	6.80	6.05	6.00	6.35	6.65	6.80	4.40	4.40	4.70	5.00	5.20	2.70	2.70	3.00	3.25	3.45	0.90	0.90	1.20	1.40	0.90	0.90	1.20	1.40	1.30	0.90	0.90	1.20	1.40	1.30	1.30	
9.0	6.20	6.20	6.60	6.90	6.20	4.75	4.75	5.05	5.35	5.55	3.45	3.45	3.75	4.00	4.20	2.05	2.05	2.35	2.55	2.75	0.55	0.55	0.85	1.05	0.55	0.55	0.85	1.05	0.95	0.55	0.55	0.85	1.05	0.95	0.95	
10.0		5.00	5.35	5.65	5.70		3.80	4.15	4.40	4.60		2.70	3.05	3.25	3.45		1.50	1.85	2.05	2.20					1.50	1.85	2.05	2.20								
11.0		4.05	4.40	4.70	4.90		3.05	3.40	3.65	3.85		2.15	2.45	2.70	2.90		1.10	1.45	1.65	1.80					1.10	1.45	1.65	1.80								
12.0		3.35	3.70	3.95	4.15		2.50	2.85	3.10	3.25		1.70	2.00	2.25	2.40		0.80	1.10	1.30	1.45					0.80	1.10	1.30	1.45								
13.0		2.75	3.10	3.40	3.55		2.05	2.40	2.60	2.80		1.35	1.65	1.90	2.05		0.50	0.85	1.05	1.20					0.50	0.85	1.05	1.20								
14.0			2.65	2.90	3.05			2.00	2.25	2.40			1.35	1.55	1.75																					
15.0			2.25	2.50	2.65			1.70	1.90	2.05			1.10	1.30	1.45																					
16.0			1.95	2.15	2.35			1.40	1.65	1.80			0.90	1.10	1.25																					
17.0			1.65	1.90	2.05			1.20	1.40	1.55			0.70	0.90	1.05																					
18.0			1.40	1.65	1.80			1.00	1.20	1.35			0.50	0.75	0.85																					
19.0			1.40	1.55	1.65			1.00	1.15	1.25				0.60	0.70																					
20.0			1.25	1.40	1.50			0.85	1.00	1.10				0.45	0.60																					
21.0			1.05	1.20	1.30			0.70	0.85	0.95																										
22.0			0.90	1.05	1.15			0.60	0.75	0.85																										
23.0				0.90	1.00				0.60	0.70																										
24.0					0.80					0.50																										
25.0					0.65																															
26.0					0.55																															
27.0					0.45																															
Critical boom angle	—	—	—	—	—	—	—	—	—	—	28°	—	—	—	—	28°	40°	—	—	—	39°	48°	56°	—	—	57°	62°	68°	72°	—	—	—	—	—		

